



RESTORE-LITE[®]

TEMPORARY POWER RESTORATION

The receiver hitch carrier is designed to allow a single operator to transport a Restore-Lite[®] unit without heavy lifting. The hitch carrier is adjustable for height and will mate with any 2" receiver hitch.

Installation and operation of receiver hitch carrier:

P80077



Receiver post

Cradle

Safety pin

Ratchet strap

Mounting bolts



SNC Manufacturing Co., Inc
101 West Waukau Avenue, Oshkosh, WI 54902
800-558-3325 or 920-231-7370 * FAX 920-231-1090
Email: telecom@sncmfg.com
Website: www.sncmfg.com

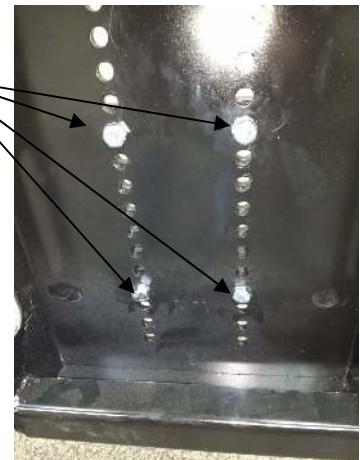
1. Locate correct position of cradle (12-1/2 to 13 inches from ground level to top of cradle lip) **and** tighten bolts (bolt thread needs to face behind cradle)



12-1/2" to 13" from top of cradle lip to ground



Bolt threads face toward rear of cradle



SNC Manufacturing Co., Inc
101 West Waukau Avenue, Oshkosh, WI 54902
800-558-3325 or 920-231-7370 * FAX 920-231-1090
Email: telecom@sncmfg.com
Website: www.sncmfg.com

T0607

2. Place receiver post into vehicle receiver, secure with included locking pin



Carrier
inserted
and
secured
into
receiver

3. Roll Restore-Lite[®] unit toward carrier to align with cradle



Restore-
Lite[®] unit
aligned
with
cradle
opening



SNC Manufacturing Co., Inc
101 West Waukau Avenue, Oshkosh, WI 54902
800-558-3325 or 920-231-7370 * FAX 920-231-1090
Email: telecom@sncmfg.com
Website: www.sncmfg.com

T0607

4. Lower handle to elevate Restore-Lite[®] stand, roll into cradle, lift upward until seated in carrier



Restore-Lite[®] stand and cradle lip will interlock to help secure unit to carrier



SNC Manufacturing Co., Inc
101 West Waukau Avenue, Oshkosh, WI 54902
800-558-3325 or 920-231-7370 * FAX 920-231-1090
Email: telecom@sncmfg.com
Website: www.sncmfg.com

T0607

5. Connect ratchet strap hooks to carrier loops and tighten



6. Ready for transportation



SNC Manufacturing Co., Inc
101 West Waukau Avenue, Oshkosh, WI 54902
800-558-3325 or 920-231-7370 * FAX 920-231-1090
Email: telecom@sncmfg.com
Website: www.sncmfg.com

T0607